

MONTHLY MEMBERSHIP PROGRESS REPORT

LOCATION IOWA

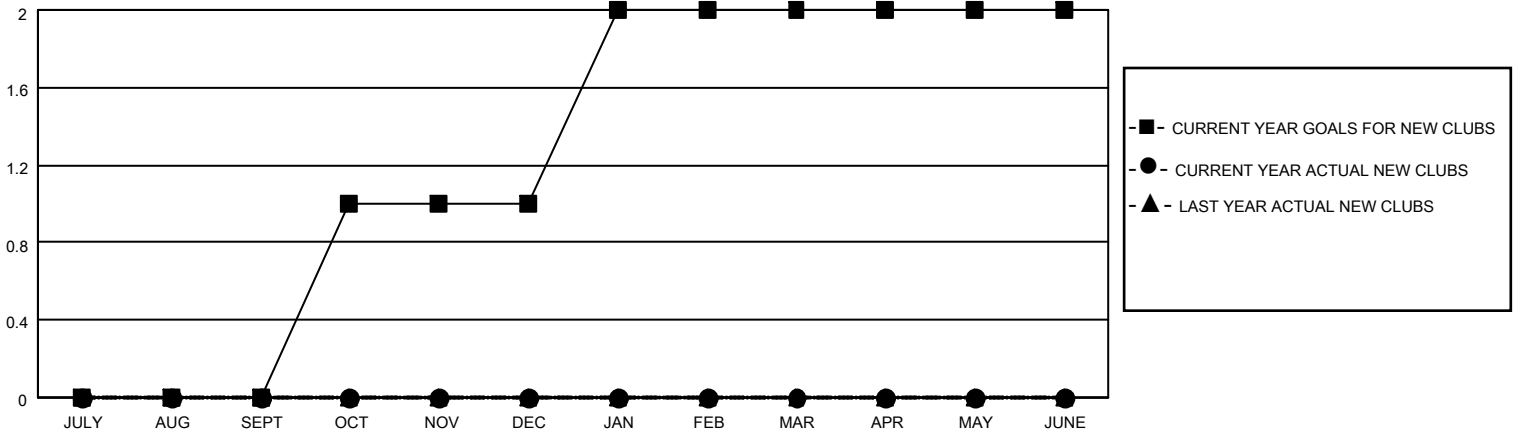
District 9 EC

Results as of: 7/31/2021

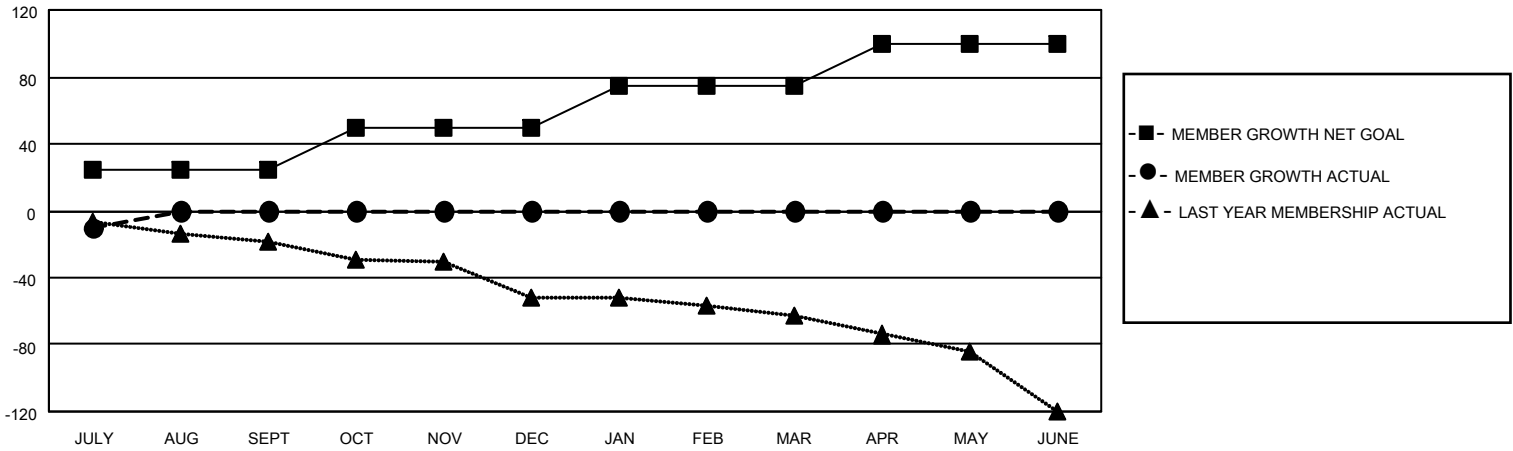
Clubs			
RESULTS FOR 2021-2022			
QUARTER	NEW CLUB GOAL	NEW CLUBS	DROPPED CLUBS
JULY/AUG/SEPT	0	0	1
OCT/NOV/DEC	1	0	0
JAN/FEB/MAR	1	0	0
APR/MAY/JUNE	0	0	0

Members			
RESULTS FOR 2021-2022			
QUARTER	MEMBER GROWTH NET GOAL	MEMBER GROWTH ACTUAL	DROPPED MEMBERS ACTUAL (including transfers)
JULY/AUG/SEPT	25	5	15
OCT/NOV/DEC	25	0	0
JAN/FEB/MAR	25	0	0
APR/MAY/JUNE	25	0	0

GOALS AND ACTUAL NEW CLUBS CUMULATIVE



GOALS AND ACTUAL MEMBERS CUMULATIVE



DROPPED CLUBS: 1	3 CLUBS OF 43 ADDED 1 OR MORE NEW MEMBERS	<u>GENDER DISTRIBUTION</u> MALE 853 (70.85%) FEMALE 351 (29.15%)
<u>DROPPED MEMBERS</u> DECEASED 3 CLUB CANCELLED 0 OTHER 12 <hr/> TOTAL 15	CLICK HERE FOR CUMULATIVE MEMBERSHIP DATA	TOTAL FAMILY UNIT MEMBERS 304 FAMILY MEMBERS PAYING HALF DUES 155